

Cyfaint = $a \times a \times a$

or

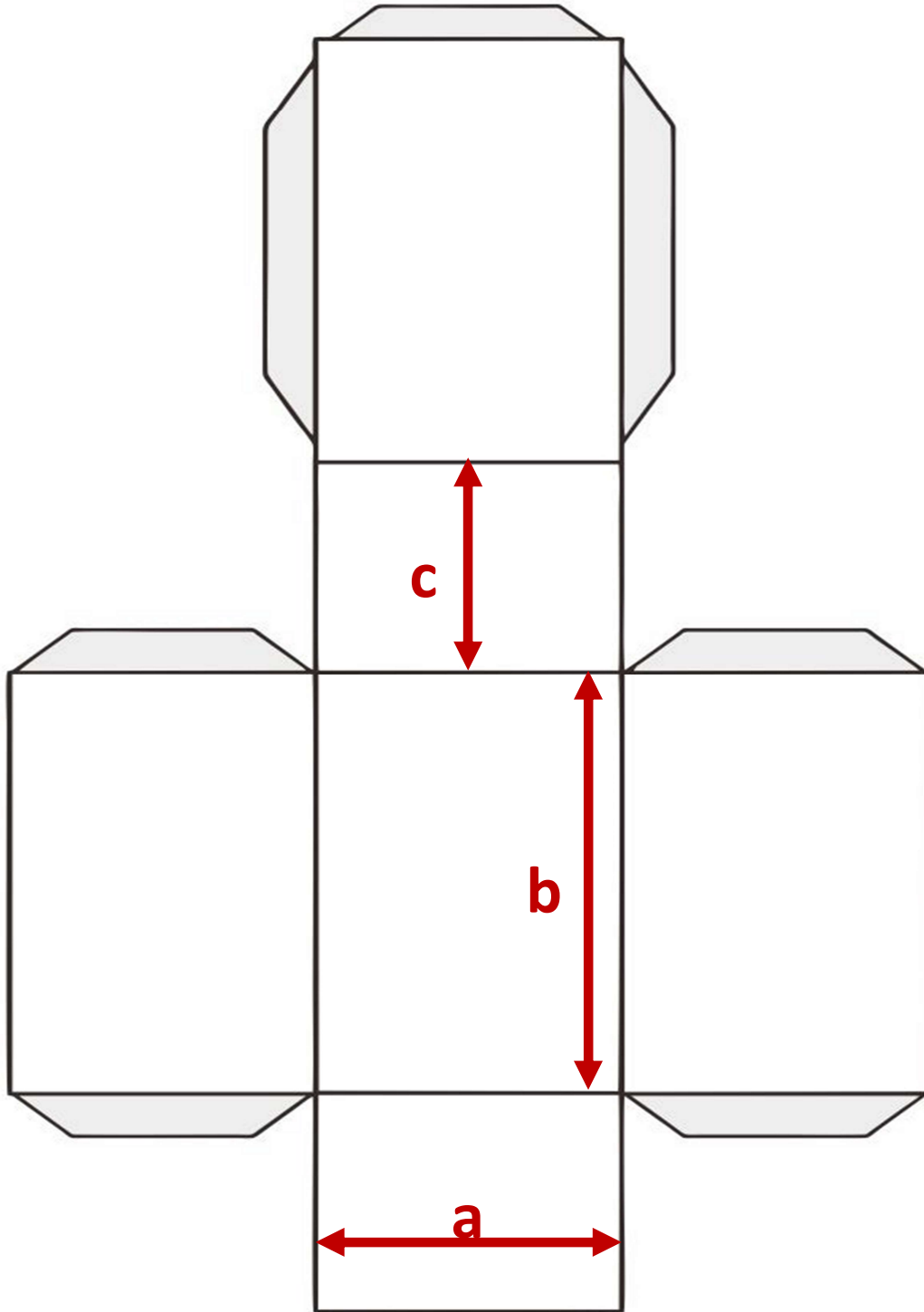
$$V = a^3$$

Ciwb

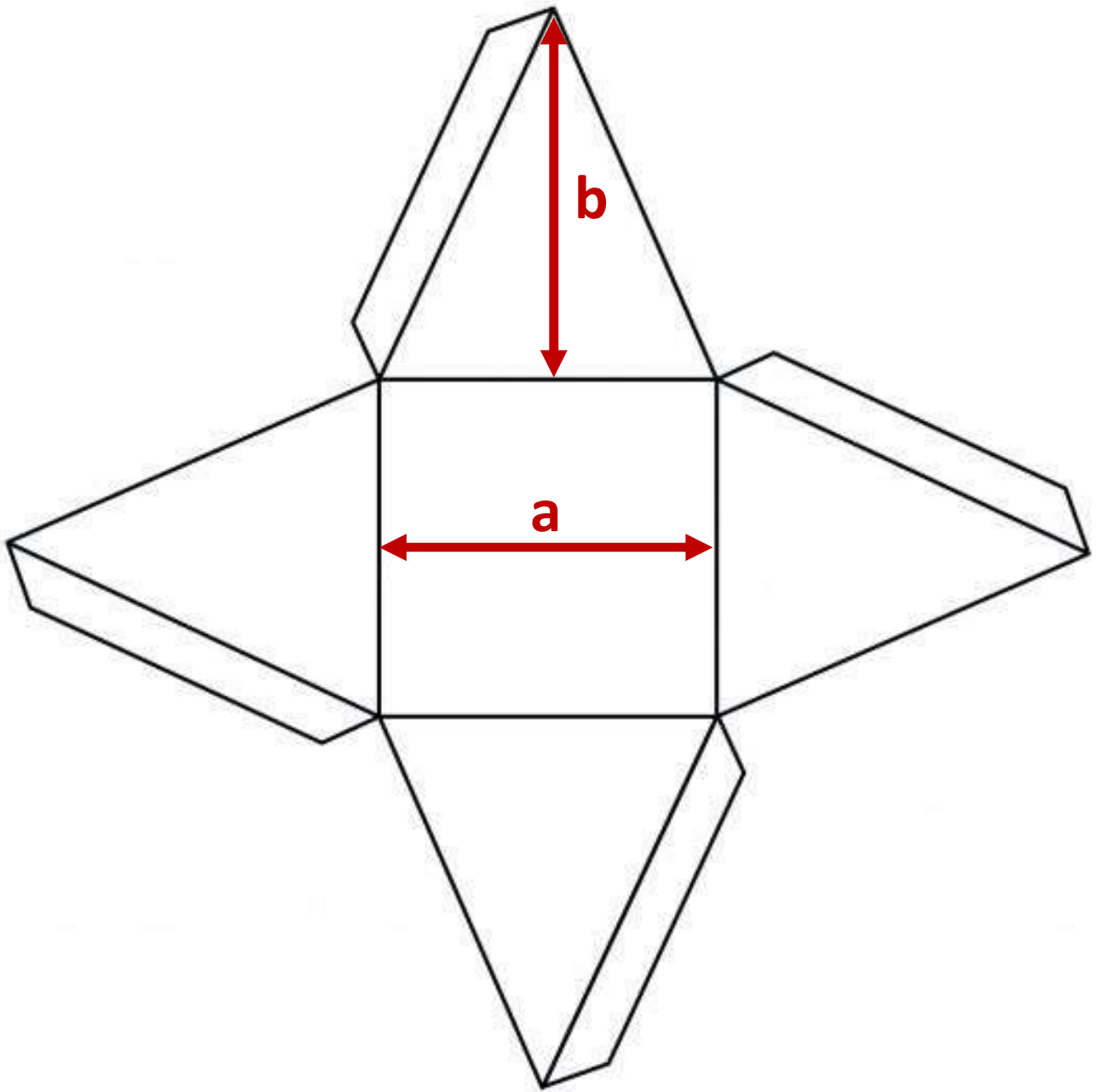
Cyfaint = a x b x c

or

$$V = abc$$



Bocs Petryal

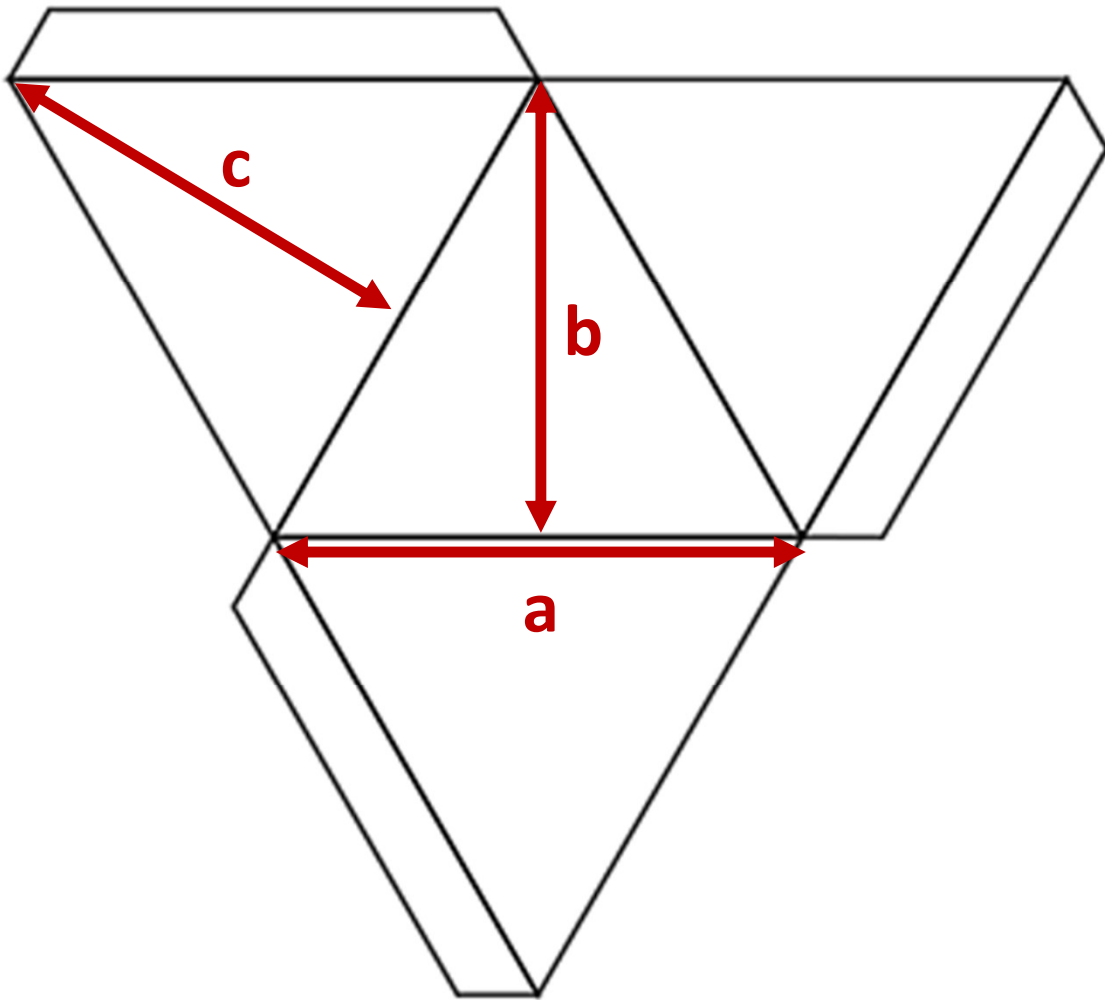


Cyfaint = (a x a x b) ÷ 3

or

$$V = \frac{a^2 b}{3}$$

Pyramid Gwaelod Sgwâr

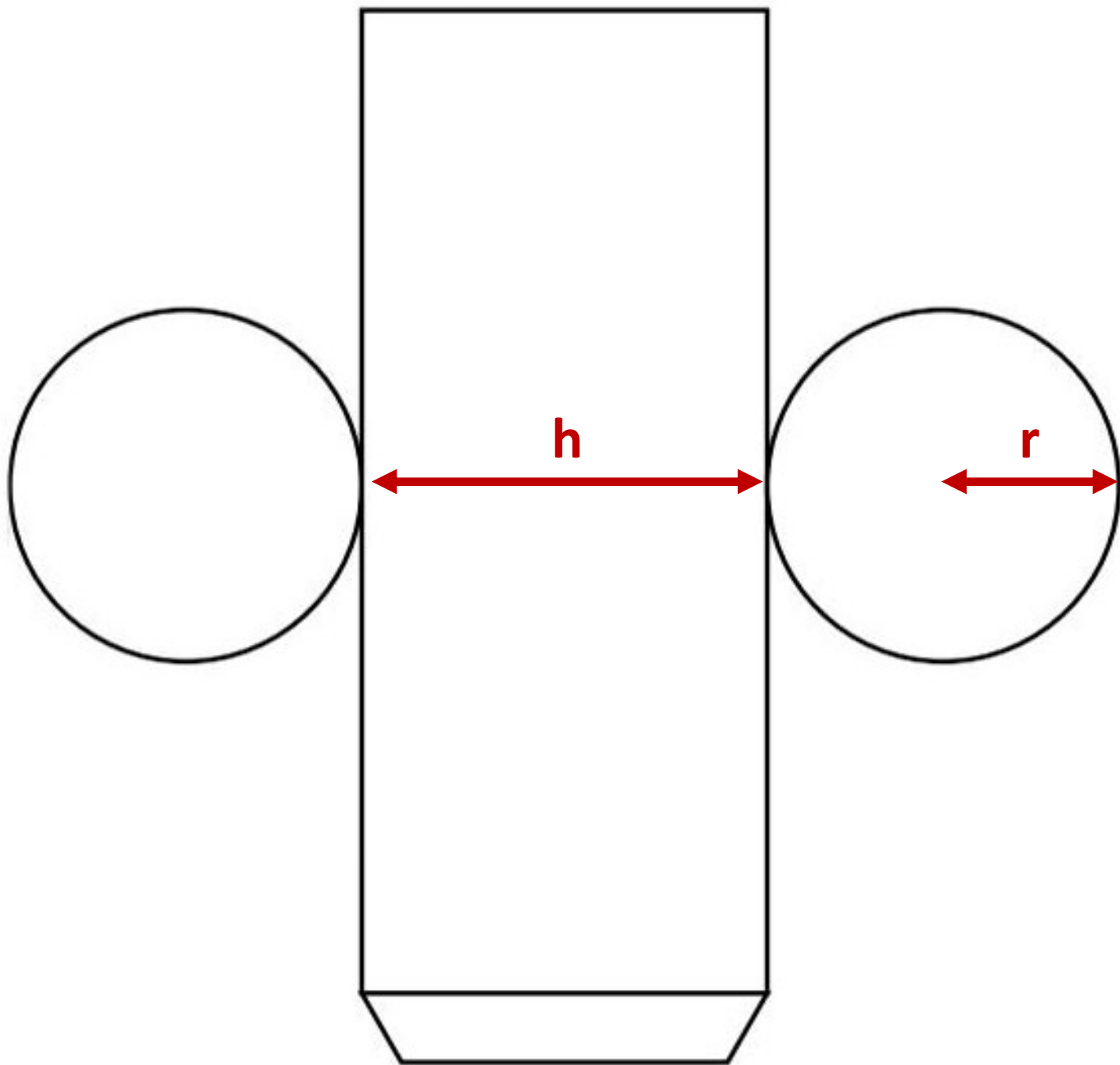


Cyfaint = (a x b x c) ÷ 6

or

$$V = \frac{abc}{6}$$

Pyramid Gwaelod Triongl



$$\text{Cyfaint} = 3.14 \times r \times r \times h$$

or

$$V = \pi r^2 h$$

Silindr