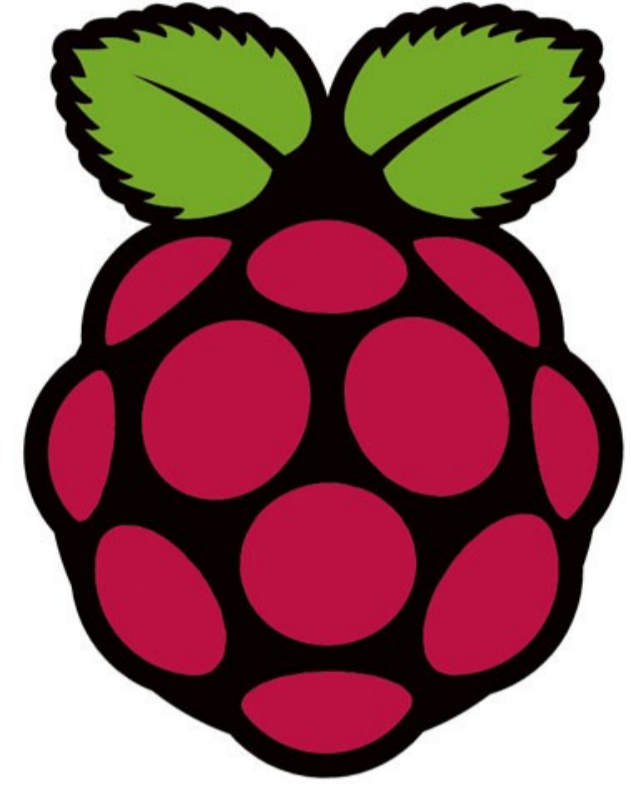
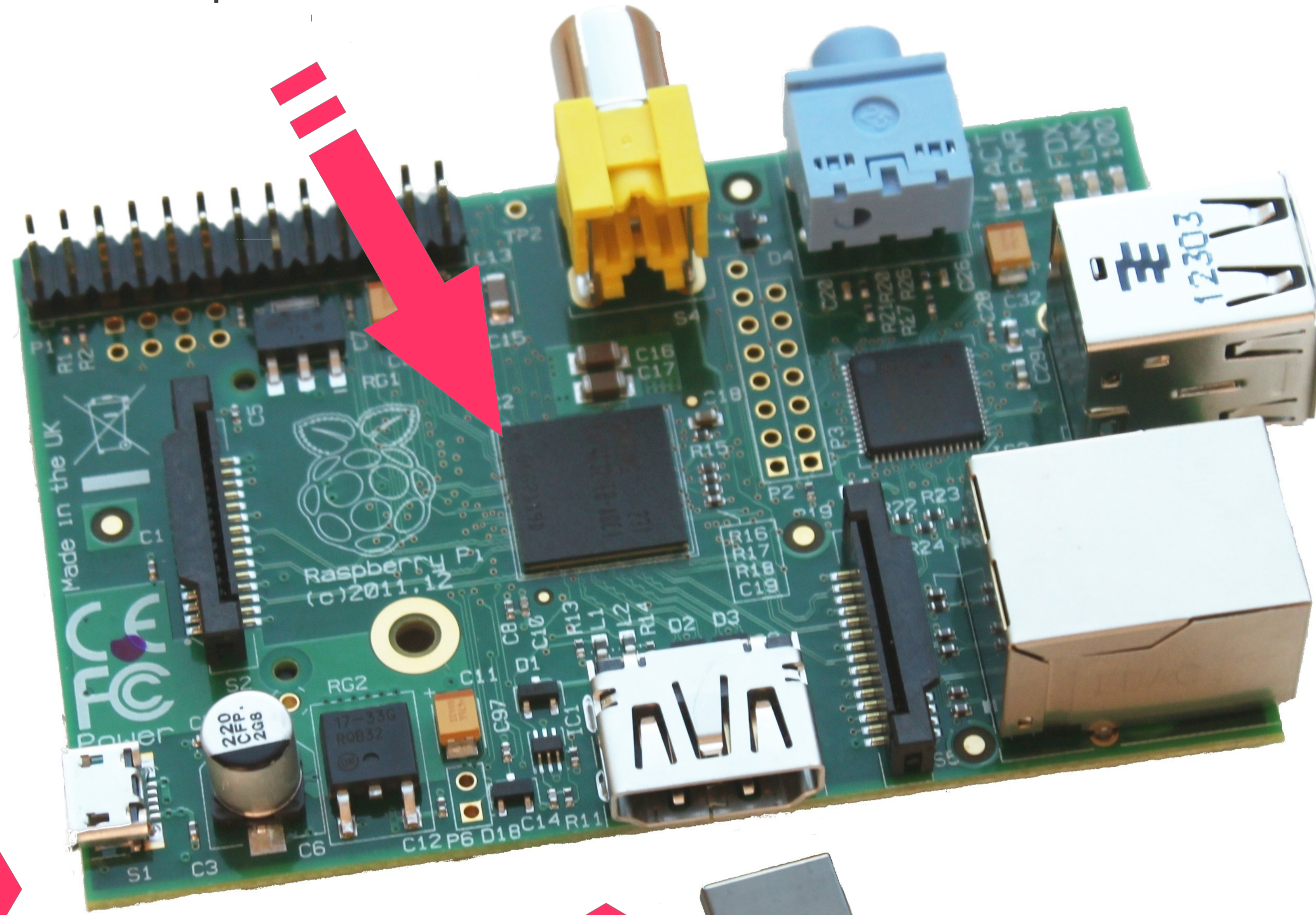


# Raspberry Pi



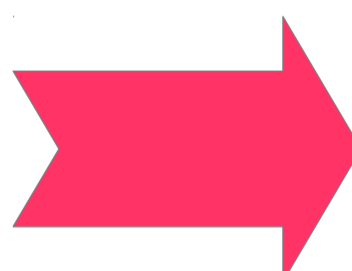
Prosesydd a chof dros dro ar un chip



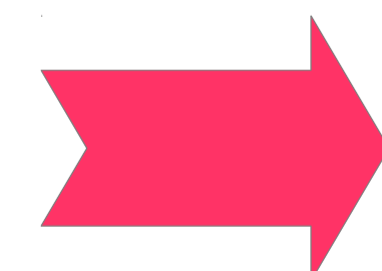
Gallwch gystylltu clustffon yma er mwyn clywed eich Pi

Ceir bysellfwrdd a llygoden USB, neu gallwch gystylltu hwb USB i gystylltu rhagor o ddyfeisiadau

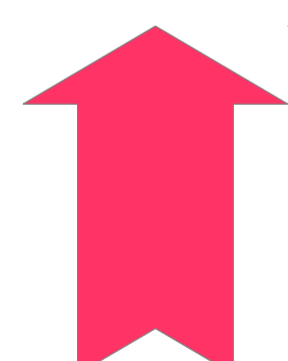
Cerdyn SD (fel sydd mewn camera) yn gweithio fel disg caled



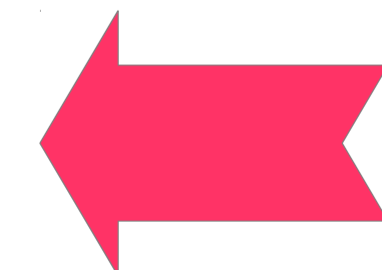
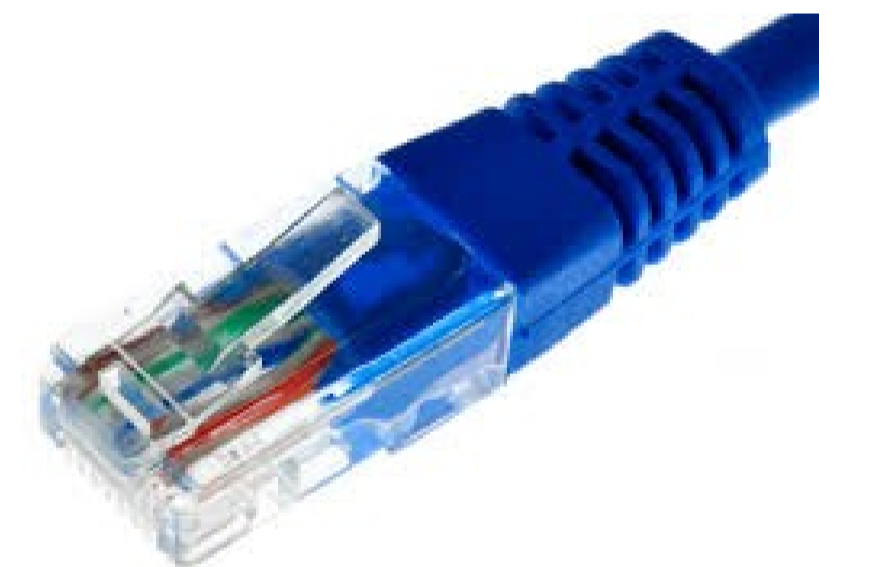
Defnyddir Micro USB (fel rydych yn ei ddefnyddio i ailwefru ffôn symudol) i roi trydan



Gallwch gysylltu HDMI i'r teledu neu sgrin cyfrifiadur.



Os oes gennych chi rwydwaith gwifrog gallwch ddefnyddio cebl ether-rwyd



Cafodd y poster yma ei greu fel rhan o'r cynllun DYGG Dod Ymlaen Gyda Gwyddoniaeth gan Hannah Dee o Brifysgol Aberystwyth a Tomi Rowlands o Ysgol Bro Ddyfi. Am fwy o wybodaeth ewch i [http://bit.ly/gows\\_dyfi](http://bit.ly/gows_dyfi)

